

# Recognition of Bolt and Nut using Stationary Wavelet Transform

Ambarish A. Salodkar  
G.H.R.C.E.,Nagpur

M.M.Khanapurkar  
G.H.R.C.E.,Nagpur

## ABSTRACT

This paper focuses on the recognition system of bolt and nut in real time for application in various industries, particularly the automotive industry. The objective of this study is to develop the image processing algorithm using stationary wavelet transform to get the normalized cropping images which would be suitable inputs processing and detection. Testing is done using a real-time visual recognition system. The MATLAB software version 7.6 is used to integrate all algorithms. The implementation also consists of a prototype that emulates the sorting of nuts and bolts. Consisting of a control system this hardware provides data through the microcontroller based system to the MATLAB code which then activates the camera for image processing. It also activates the motor differently to sort the different parts. The result shows that the system can detect moving object accurately on the belt conveyor and sort them accordingly as required for the application.

## Keywords

Pattern recognition, bolt and nut, stationary wavelet transform, conveyor belt, microcontroller.

## 1. INTRODUCTION

Computer vision is the science and technology of machines that can see. The machine is made by integration of many parts to extract information from an image in order to solve some task. As a scientific discipline, computer vision is concerned with the theory behind artificial systems that extract information from images. Each of the application areas described above employ a range of computer vision tasks; with more or less well defined measurement or processing problems, which can be solved using a variety of methods. Some examples of typical computer vision tasks are presented below. Recognition is the classical problem in computer vision, image processing, and machine vision. It is related to the determination of whether or not the image data contains some specific object, feature, or activity. This task can normally be solved robustly and without effort by a human, but is still not satisfactorily solved in computer vision for the general case, involving arbitrary objects in arbitrary situations. The existing methods for dealing with this problem can at best solve it only for specific objects, such as simple geometric objects, human faces, printed or handwritten characters, or vehicles, and in specific situations, typically described in terms of well-defined illumination, background, and pose of the object relative to the camera ([1]–[6], [8], [11]). The bolt and nut is a sample of a fastener which is a hardware device that mechanically joins or affixes two or more objects together. Fasteners can also be used to close a container such as a bag, a box, or an envelope; or they may involve keeping together the sides of an opening of flexible material, attaching a lid to a container, etc. Stationary wavelet transform is a technique that will be suitably used for the application purpose for sorting of nuts and bolts on a

conveyor belt in an industry. MATLAB is the abbreviation of matrix laboratory, which has several hundred built-in functions packages and thirty kinds of tool kits. In this paper, we use the MATLAB and implement the stationary wavelet transform for image processing and detection. The optimization algorithm has less iteration than implementation with Artificial Neural Network process for the same task and other improved algorithms while the convergence rate is faster and the precision is higher [7]. Curve figures in terms of perimeter radius are used as feature extraction ([6], [10], [12]) for recognizing objects. This method is more suitable for real time recognition systems compared with previous research [5], because we can get better iteration time, speed of belt conveyor and accuracy. This paper is organized as follows; software implementation is proposed in the section 2. Methodology and hardware details are presented in section 3. The result and discussion are presented in section 4. Finally, section 5 presents the conclusion on the findings.

## 2. SOFTWARE FRAMEWORK DEVELOPMENT

A software framework for image processing in defect detection of real-time visual inspection system has been developed using stationary wavelet transform technique and is the Real-Time Intelligent Visual Inspection. The framework will start at image acquisition and will go through a series of processes before the results can be output. Fig.1 shows the developed IVIS software. The process start with image acquisition where image will be capture, follow by pre-processing of the images captured to reduce noises in the image. Images are then enhanced to ease the analyzing process. After the images have been enhanced, the edge inside the images was then determined. Lastly according to the parameter of edges, the status of a bottle in the bottling process can be determined by using neural network and action can be taken to follow up this result [15].

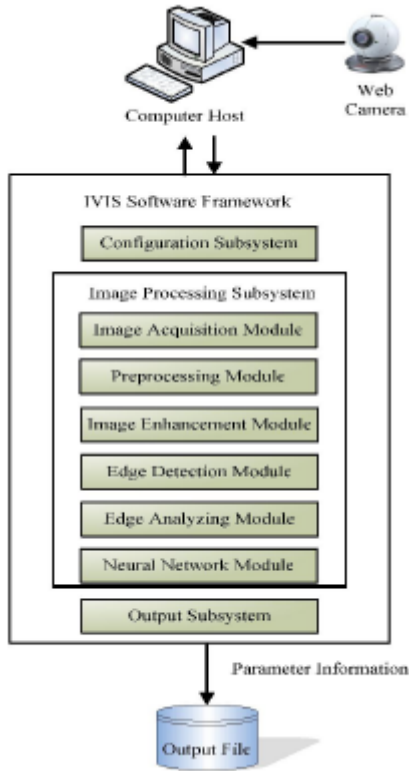


Fig.1 Software Framework

## 2.1 Configuration subsystem

Video configuration module used for configure the information e.g. to choose proper webcam device, image brightness, image colour, etc. This module also use for configure the information such as image size and image resolution. In this case, image size is fixed i.e. 352 x 280 pixels, and the image input format is in gray scale.

## 2.2. Image processing subsystem

Image processing sub-system consists of some modules as shown in figure 1.

### 2.2.1. Image acquisition module

When come into development of a vision system, image acquisition is the first and most important step to be taking care of. Any deficiency of the initial image can cause a major problem while processing and analyzing the image. Hardware equipment carries a very important role to acquire image with sufficient contrast and sharp focusing. However in this paper, we will stress on the software framework in this section, and an ordinary low-end webcam have been used as an image acquisition device. In the software point of view, MATLAB has been chosen as the development tools. Using the tools mentioned, there are several ways to acquire a video stream from a webcam. The most common ways are DirectX, QuickCAM or VFW (Video For Windows). A real-time series of image can be acquired using the tools mentioned. Each individual image was stored and further analyzing can be carried on thereafter.

### 2.2.2. Pre-processing module

After the image has been captured from the first stage, each image will go through the pre-processing stage to eliminate noise inside the image, to enhance the result of the output. Imaging sensor including camera-like devices, rarely have evenly illuminated image. Even in the absence of vignetting (this causes off-axis rays to be lost by collision with the lens mount at large apertures - typically f/2 or greater) image brightness falls off rapidly away from the axis of the imaging lens [16].

### 2.2.3. Image enhancement module

After the noises have been removed at the pre-processing stage, the image is then processed to maximize the contrast to give optimum output for processing the edges. In our case, since the colour of our target unit is in bright colour, whereas the background in dark colour, therefore to maximize the contrast of the image. The first part of the algorithm is used to maximize the contrast of two regions and the edge in the image. If the pixel value in a pixel is more than a threshold value, certain value of brightness (enhance-brightness) is adds to the pixel.

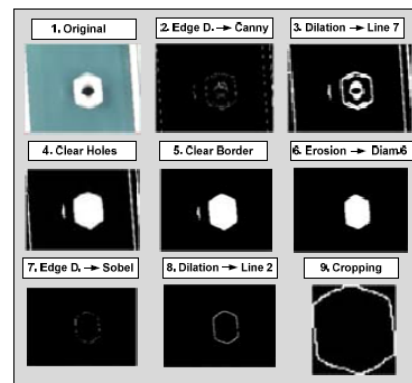


Fig.2 Image processing step for bolt

Whereas when it is less than the threshold value, certain value of darkness value (enhance-darkness) is subtracted from the pixel. Since the value of a pixel is range from 0 to 255, therefore, the second part of the algorithm is used to ensure the pixel value after calculation is within the range. Figure 2 and 3 shows an image result from the enhancement process.

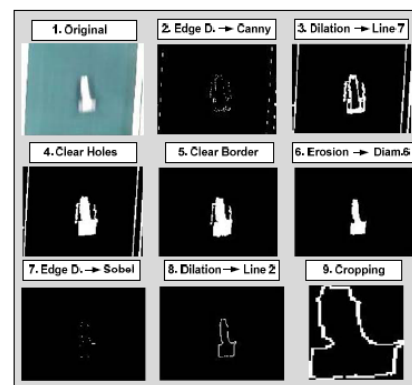


Fig.3 Image processing step for nut

### 3. METHODOLOGY

#### Hardware Framework

The framework starts when metal sensor detects the presence of a moving object on the belt conveyor. This signal is provided to the microcontroller unit that tells Matlab program that a nut or bolt is present in front of the webcam. With a response time of less than 250 ms, the sensor via the controller system initiates the web camera to capture the object. The captured image then will be processed by computer using image processing and stationary wavelet transform, finally sending the output signal to the microcontroller ATmega32. As an actuator, the microcontroller which is connected to a personal computer via serial port RS232, orders the Smart Peripheral Controller (SPC) motor to differentiate the bolt and nut in separate places as shown in Fig. 1.

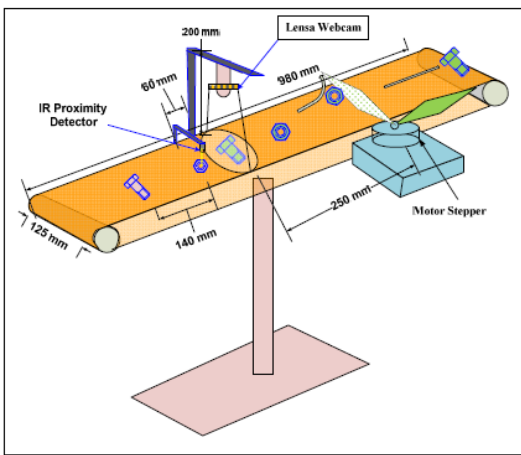


Fig.4 Layout of the prototype

The hardware system provides a communication between the prototype setup and the MATLAB code. The microcontroller is programmed using C language and controls the input and output of the system. The microcontroller can also control the speed of the conveyor in case the MATLAB code goes slow due to heavy processes running on the machine.

### 4. RESULT & DISCUSSION

After the image processing sequences, we have a final result for each bolt and nut as shown in Fig. 2 and Fig. 3. The results of stationary wavelet transform of testing can be seen in the Fig. 6 and Fig. 7. By using the heuristic method for three types of bolt and nut, we can decide that for an output value of less than 0.2 to almost zero is defined as a nut, whereas the output value of greater or equal to 0.2 to almost one is defined as a bolt.

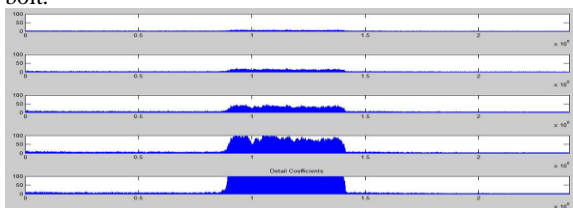


Fig.5 Wavelet transform graph for Nut

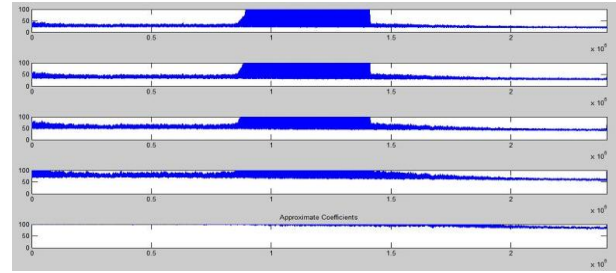


Fig.6 Wavelet transform graph for Bolt

### 5. CONCLUSIONS

This experiment shows satisfactory results as compared to the standard Artificial Neural Network technique while maintaining same threshold error and a good processing speed-up in terms of success rate, speed of belt conveyor, and types of bolt and nut. The success rate is more than 65%, for fixed speed of conveyor belt, and involving bolt and nut. The success rate can be improved up to 74% if we had used an additional spotlight on the object instead of the room fluorescent lighting, with a better belt conveyor (without any black spot). The speed can also be increased if we had used a laser pointer which has a better response time, instead of metal sensor as the sensor for the object.

### 6. REFERENCES

- [1] Akbar H. and Prabuwno A. S., "The design and development of automated visual inspection system for press part sorting," in *Proc. International Conference on Computer Science and Information Technology (ICCSIT'08)*, 2008, pp. 683-686.
- [2] Akbar H. and Prabuwno A. S., "Webcam based system for press part industrial inspection," *International Journal of Computer Science and Network Security*, vol. 8, pp. 170-177, Oct. 2008.
- [3] Akbar H., Prabuwno A. S., Izzah Z., and Tahir Z., "Image processing algorithm in machine vision approach for industrial inspection," in *Proc. the 1st Makassar International Conference on Electrical Engineering and Informatics (MICEET'08)*, 2008, pp. 58-62.
- [4] Akbar H. and Prabuwno A. S., "Automated visual inspection (AVI) research for quality control in metal stamping manufacturing," in *Proc. the 4th International Conference on Information Technology and Multimedia (ICIMU'08)*, 2008, pp. 626-630.
- [5] Dewanto S., Suwandi, T. and Yanto, E., "Sistem sortir mur dan baut menggunakan jaringan syaraf tiruan," *Jurnal Teknik Komputer*, vol. 13, no. 1, pp. 1-13, 2005.
- [6] Kyaw M.M., Ahmed S. K., and Md Sharrif Z. A., "Shape-based sorting of agricultural product using support vector machines in a MATLAB/SIMULINK environment," in *Proc. 5th International Colloquium on Signal Processing & Its Applications (CSPA'09)*, 2009, pp. 135-139.
- [7] Zhao Z., Xin H., Ren Y., and Guo X., "Application and comparison of BP neural network algorithm in MATLAB," in *Proc. International Conference on Measuring Technology and Mechantronic Automation*, 2010, pp. 590-593.
- [8] Lahajnar F., Bernard R., Pernus F., and Kovacic S., "Machine vision system for inspecting electric plates,"

- Computers in Industry*, vol. 47, no. 1, pp. 113-122, Jan. 2001.
- [9] Liu L., Chen J., and Xu. L., Realization and Application Research of BP neural network based on MATLAB, 2008.
- [10] Nooritawati M. T., Aini H., Salina A. S., and Hafizah H., "Pengecaman insan berasaskan kaedah profil sentroid dan pengelas rangkaian neural buatan," *Jurnal Teknologi Universiti Teknologi Malaysia*, pp. 69-79, Sep. 2010.
- [11] Prabuwo A. S. and Akbar H., "PC based weight scale system with load cell for product inspection," in *Proc. International Conference on Computer Engineering and Technology (ICCET'09)*, 2009, pp. 343-346.
- [12] Prabuwo A. S., Sulaiman R., Hamdan A. R., and Hasniaty A., "Development of intelligent visual inspection system (IVIS) for bottling machine," in *Proc. IEEE Region 10 Conference of TENCON*, 2006, pp. 1-4.
- [13] Saad H. and Hussain A., "Classification for the ripeness of papayas using artificial neural network (ANN) and threshold rule," in *Proc. 4th Student Conference Research and Development*, 2006, pp. 132-136.
- [14] Siang J. J., *Jaringan Syaraf Tiruan & Pemogramannya Menggunakan Matlab*, Penerbit ANDI, Jogjakarta, 2005.
- [15] A.S. Prabuwo, Y. Away, and A.R. Hamdan, Design and Development of Intelligent Vision System for Quality Control in Bottling Production Line, Proceeding of FTSM UKM Postgraduate Seminar, 2004, pp. 138-141.
- [16] L.N. Wayne, The Automated Inspection of Moving Webs using Machine Vision, IEE Colloquium in Application of Machine Vision, 1995, pp. 3/1-3/8.